

Reissued: 21-Mar-00

Model: NAD 30S/30/40	Date: 03-Feb-00	No.: RA230053a
----------------------	-----------------	----------------

## RTB Correction

The items in bold italics have been corrected or added.

Subject: NAD NIB HISTORY		Prepared by: K. Ugaeri	
From: Technical Services Dept., GTS Division			
Classification:	<input type="checkbox"/> Troubleshooting <input type="checkbox"/> Mechanical <input type="checkbox"/> Paper path <input type="checkbox"/> Other (      )	<input type="checkbox"/> Part information <input type="checkbox"/> Electrical <input type="checkbox"/> Transmit/receive	<input type="checkbox"/> Action required <input type="checkbox"/> Service manual revision <input checked="" type="checkbox"/> Retrofit information

Firmware history for the NAD30/40 NIB Option.

Firmware	File No.	Version	Production
Ric231a.upd	V231.zip	2.31a	1st Mass Prod.
Ric235b.upd	V235b.zip	2.35b	<b><i>August Prod. '99</i></b>
Ric238a.upd	V238a.zip	2.38a	October Prod.'99

Symptom Corrected	Version
No log on to NDS for Novell 4.11 <b><i>The CIDR (Classless Inter – Domain Routing) feature is supported.</i></b>	2.38a
When a reset is required in SNMP, the NIB will reset without any response and hang up.	2.35b

\* Version 2.40 was temporary released in a Field Problem Report. This is not officially released due to its side effects. Do not use this version in the filed.

Model: NAD 30S/30/40

Date: 03-Feb-00

No.: RA230053

A2915582	A891-01
E	H0290600008~
<b>F</b>	<b>H2090800001~</b>
<b>G</b>	<b>H2091100001~</b>

A2915584	A891-02
D	H2090600008~
E	H2090700025~
<b>F</b>	<b>H2090900486~</b>
<b>G</b>	<b>No production</b>
<b>H</b>	<b>TBA</b>

A2915585	A891-02
	<b>H2090900486~</b>
<b>A</b>	<b>No production</b>
<b>B</b>	<b>TBA</b>

A2915586	A891-02
	<b>H2090900486~</b>
<b>A</b>	<b>No production</b>
<b>B</b>	<b>TBA</b>

A2915587	A891-03
	<b>H2090601551~</b>
<b>A</b>	<b>TBA</b>

Model: Eland 99 (Network Interface Board)		Date: 21-Mar-00	No.: RG678001
Subject: ROM History		Prepared by: K. Miura	
From: Technical Services Dept., GTS Division			
Classification:	<input type="checkbox"/> Troubleshooting <input type="checkbox"/> Part information <input type="checkbox"/> Action required <input type="checkbox"/> Mechanical <input type="checkbox"/> Electrical <input type="checkbox"/> Service manual revision <input type="checkbox"/> Paper path <input type="checkbox"/> Transmit/receive <input checked="" type="checkbox"/> Retrofit information <input type="checkbox"/> Other (      )		

Firmware history for Eland 99 (Network Interface Board).

The software versions listed below can be used for the NIBs of the following models:

Stinger-C1/ Stinger-C1L/ Russian-C1/ Russian-P/ Adonis-C/ Adonis-P/ FresaWIN/ PomeloWIN/ Color Controller RC-200

G6785839	File No. (G678Rxxx)	Version	Production
B	001	3.7.5	1st release
C	002	3.7.7	February Prod. '99
D	003	3.8.6	March Prod. '99
E	004	3.8.7	April Prod. '99
F	005	3.8.8	June Prod. '99
G	006	3.9.2	July Prod. '99
H	007	3.9.8	October Prod. '99
J	008	4.0.0	November Prod. '99

Symptom Corrected	
PCL text filter support has been added.	J
The "RICOH" brand name has been deleted from several functions and reports.	J
An Italian wording for "Config Reference" used in the Web status monitor has been changed to "Riferim. Config".	H
A Spanish wording for "Default Gateway Address" used in the Web status monitor has been changed to "Direcci. Gateway".	H
A type of Cisco router caused a problem in browsing the NIB in AppleTalk network. The cause of this was in the Cisco router, but the NIB firmware has been modified to fix this.	H
When a printer error occurs, the printer information cannot be accessed using Macintosh printer utilities such as the Apple Printer Utility.	G
The IPP (Internet Printing Protocol) function has been added.	G
On the web status monitor, the wording in German was incorrect. "FreierSpeicher" has been corrected to "Freier Speicher".	F
The Web status monitor displays a "No Tray/No Paper" error when a tray is not closed completely. The message in this case has been changed to "Other error".	F

Model: Eland 99 (Network Interface Board)

Date: 21-Mar-00

No.: RG678001

Symptom Corrected	
Disabling (Down) or enabling (Up) AppleTalk protocol from the operation panel sometimes did not take effect after the change. To avoid this, the firmware has been changed to save a new setting to the NVRAM immediately after a change.	F
One banner page data of NetWare was split into two pages when using NetWare 3.12 pserver mode.	E
In the NetWare remote printer mode, the NIB consumed a server connection license. To avoid this, the firmware has been modified to disconnect the NCP connection immediately after the remote printer has connected to the server.	E
Software modified so that it can also be used for the Stinger-C.	D
On the web status monitor, the incorrect icon was used for "Paper Empty".	C
When the NIB was receiving five communications (five print jobs) from PCs at the same time, any additional print job (6th print job) disappeared.	C

Model: NIB 450E		Date: 26-May-00	No.: RA855001
Subject: NIB Firmware History		Prepared by: K. Takagi	
From: Technical Services Dept., GTS Division			
Classification:	<input type="checkbox"/> Troubleshooting <input type="checkbox"/> Part information <input type="checkbox"/> Action required <input type="checkbox"/> Mechanical <input type="checkbox"/> Electrical <input type="checkbox"/> Service manual revision <input type="checkbox"/> Paper path <input type="checkbox"/> Transmit/receive <input checked="" type="checkbox"/> Retrofit information <input type="checkbox"/> Other (      )		

Firmware history from V2.38 to 2.46a for the NIB-450e Option

Firmware	File No.	Version	Production
Ric246a.upd	V246.zip	2.46a	June Prod. 2000

Directory on the FTP server (QAC server):  
 \Firmware\Nib\NIB-450e

File Name: ric246a.zip

Fixed Bug	Version
1. LPR printing fix. When the connection request list was cleared due to duplicate requests, the flag was not set to accept new requests. This could result in the NIB not responding to connection requests for a period of time. 2. Improved the fix from 2.37 for LPD printing to properly handle the LPD Daemon Command 1 (print waiting jobs). 3. Fixed reset after flash download. 4. Fixed html page test print.	2.38
1. Now the NDS tree and context is not lost when downloading a new ROM version. 2. Fixed reset after flash download. 3. Fixed HTML reset from Internet Explorer supporting HTTP 1.1. The reset would work, but it would take 2 minutes due to persistent connections. 4. Clear zero length AppleTalk name when NIB loads AppleTalk stack. 5. SNMP Fixes. 6. Added a range check on NetWare Frame Type. <ul style="list-style-type: none"> <li>a. Fixed Get Next for NetWare Queue Index and Message Index.</li> <li>b. Changed NetWare Port Table To 1 blank entry.</li> <li>c. Made all email objects not supported. Most show as "N/A" and some have values, but now none are writeable.</li> </ul> 7. Fix Novell Notify to user after a job. 8. Added new mfdiag15 to the build tree to save and to restore NVRAM. 9. Added code to reinitialize card if the prefix doesn't match what is in NVRAM. This is mostly for manufacturing when downloading different code into a NIB card. 10. Fixed consistency of enable / disable and made serial number read / only in SNMP. 11. Fixed data out of order on concatenated LPR jobs with banners enabled.	2.39
1. Fixed potential crash during soft reset where an interrupt could hit before the vector table was set. 2. Fixed problem where MAP could display unit as NPS_XXXXXX. 3. Fixed end_doc / start_doc between concatenated LPR jobs from Linux. It sends ctrl files in a different way than UNIX. 4. Fixed a problem where the HTTP server could reset the connection before all the data was sent. 5. Now can detect 0 as an invalid IP Address in the 1st and last IP Address location in HTML.	2.40

Model: NIB 450E

Date: 26-May-00

No.: RA855001

Fixed Bug	Version
<ul style="list-style-type: none"> <li>6. Fixed Novell NDS printing on 802.2.</li> <li>7. Fixed Sockets Printing for the AS400 (fin followed by reset connection).</li> <li>8. Fixed LPR control file fragmentation problem.</li> </ul>	2.40
<ul style="list-style-type: none"> <li>1. UDP Broadcast Filter.</li> <li>2. Fixed SNMP to send objects beyond DPI MIB to printer.</li> <li>3. Fixed Novell notify toner out message. It was sending "toner low."</li> <li>4. Fixed LPR fragmentation.</li> </ul>	2.41
<ul style="list-style-type: none"> <li>1. Ethernet changes to handle heavy traffic conditions.</li> <li>2. Fixed UDP filter for MAP discovery for units supporting DHCP/WINS functionality.</li> <li>3. Fixed DHCP offer with destination IP Address not equal to 255.255.255.255.</li> <li>4. TCP Page accepted changes with any password. Not all products are affected. Need to test individually.</li> <li>5. Changed configuration manager to address loss of serial number problem.</li> <li>6. Added a ":" after word Address on Network Address Page.</li> <li>7. TCPIP being disabled caused problems for IPX on IPP builds.</li> <li>8. Fixed potential reset after LPD SYN/FIN command.</li> <li>9. Fixed MAP over IPX when TCP/IP is disabled.</li> </ul>	2.42
<ul style="list-style-type: none"> <li>1. Fixed 100 base T auto detection by using link instead of auto negotiate complete.</li> <li>2. SNMP fix returning bad values.</li> </ul>	2.43
<ul style="list-style-type: none"> <li>1. Changed Novell Network ID to HEX on the status page.</li> <li>2. Factory default NIB if NVRAM prefix does not match default prefix.</li> <li>3. Added Intelligent Novell Frame Type algorithm for frame type discovery.</li> <li>4. Fixed Flash_up on an isolated network.</li> <li>5. Fixed Arp / Ping for an odd IP Address which was caused by a November 18, 1999 fix.</li> <li>6. Driver now recognizes and uses FTP type for printing. It used to use TCP type.</li> <li>7. Changed AppleTalk device name to mimic AppleTalk Printer Name via SNMP.</li> <li>8. Fixed concatenated LPR jobs by removing ATTN_EOF between jobs.</li> </ul>	2.44
<ul style="list-style-type: none"> <li>1. IP Fragmentation fix.</li> <li>2. Fixed echo on 2nd Telnet Login.</li> <li>3. Fixed SNMP Traps.</li> </ul>	2.45
<ul style="list-style-type: none"> <li>1. Network speed selection (New function)  By default, the Network Interface Board (NIB) automatically detects the available speed of the network connection during power-on initialization and sets the appropriate speed. However, in some limited configurations, it may be desired to shut down the source device while leaving the printer powered on.  When the NIB detects the lost connection, it will try to reconnect and default to 10MB mode. After the source device connection is returned, it will not restore the connection, if it is 100MB only.  To compensate for this, a special Network Speed Selection HTML page is available to select a single network speed for the NIB.  This page may be accessed by specifying &lt;nic address&gt;/nic/speed on your browser. The default selection is "Auto". If one of the single speed selections is set, the NIB will only operate in that mode until either the operator changes the selection or restores the factory settings.  To select a single speed, click on the desired button (10 or 100), and then click "Apply". Reset the printer and verify the correct speed setting via a status page.  The new setting may be verified by printing a network status page. Once set, the speed should remain in that setting during power cycles.</li> </ul>	2.46a

Model: NIB 450E		Date: 12-Dec-00	No.: RA855002
Subject: Firmware Release		Prepared by: K. Takagi	
From: Technical Services Dept., GTS Division			
Classification:	<input type="checkbox"/> Troubleshooting <input type="checkbox"/> Part information <input type="checkbox"/> Action required <input type="checkbox"/> Mechanical <input type="checkbox"/> Electrical <input type="checkbox"/> Service manual revision <input type="checkbox"/> Paper path <input type="checkbox"/> Transmit/receive <input type="checkbox"/> Retrofit information <input checked="" type="checkbox"/> Other (      )		

Firmware history from V2.38 to 2.46a for the NIB-450e Option.

Firmware	File No.	Version	Production
Ric231a.upd	V231.zip	2.31a	1st Mass Prod
Ric235b.upd	V235b.zip	2.35b	August Prod. 1999
Ric238a.upd	V238a.zip	2.38a	October Prod. 1999
Ric246a.upd	V246.zip	2.46a	June Prod. 2000
Ric249a.upd	V249.zip	2.49a	October Prod. 2000

Directly on the Internet WEB server:

MFP\NIB-450e\USA\_EUR\_ASI\V2.49a\V249.exe

Fixed Bug	Version
1. When an SNMP reset is required, the NIB will reset without any response and hang up.	2.35b
1. No log on to NDS for Novell4.11 2. LPR printing fix. When the connection request list was cleared due to duplicate requests, the flag was not set to accept new requests. This could result in the NIB not responding to connection requests for a period of time. 3. Improved the fix from 2.37 for LPD printing to properly handle the LPD Daemon Command 1 (print waiting jobs). 4. Fixed reset after flash download. 5. Fixed test print html page.	2.38a
1. Now the NDS tree and context is not lost when downloading a new ROM version. 2. Fixed reset after flash download. 3. Fixed HTML reset from Internet Explorer supporting HTTP 1.1. The reset would work, but it would take 2 minutes due to persistent connections. 4. Clear zero length AppleTalk name when the NIB loads the AppleTalk stack. 5. SNMP Fixes. 6. Added a range check to NetWare Frame Type. a. Fixed Get Next for NetWare Queue Index and Message Index. b. Changed NetWare Port Table To 1 blank entry. c. Made all email objects not supported. Most shown as "N/A" and some have values, but now none are writeable. 7. Fix Novell Notify to user after a job. 8. Added new mfdiag15 to the build tree to save and to restore NVRAM. 9. Added code to reinitialize card if the prefix doesn't match what is in NVRAM. This is mostly for manufacturing when downloading different code into a NIB card. 10.Fixed consistency of enable / disable and made serial number read / only in SNMP. 11.Fixed data out of order on concatenated LPR jobs with banners enabled. 12.Fixed potential crash during soft reset where an interrupt could hit before the vector table was set. 13.Fixed problem where MAP could display the unit as NPS_XXXXXX.	2.46a

Model: NIB 450E

Date: 12-Dec-00

No.: RA855002

Fixed Bug	Version
<ol style="list-style-type: none"> <li>14. Fixed end_doc / start_doc between concatenated LPR jobs from Linux. It sends ctrl files in a different way than UNIX.</li> <li>15. Fixed a problem where the HTTP server could reset the connection before all the data was sent.</li> <li>16. Now can detect 0 as an invalid IP Address in the 1st and last IP Address location in HTML.</li> <li>17. Fixed Novell NDS printing on 802.2.</li> <li>18. Fixed Sockets Printing for the AS400 (fin followed by reset connection).</li> <li>19. Fixed LPR control file fragmentation problem.</li> <li>20. UDP Broadcast Filter.</li> <li>21. Fixed SNMP to send objects beyond DPI MIB to printer.</li> <li>22. Fixed Novell notify toner out message. It was sending "toner low."</li> <li>23. Fixed LPR fragmentation.</li> <li>24. Ethernet changes to handle heavy traffic conditions.</li> <li>25. Fixed UDP filter for MAP discovery for units supporting DHCP/WINS functionality.</li> <li>26. Fixed DHCP offer with destination IP Address not equal to 255.255.255.255.</li> <li>27. TCP Page accepted changes with any password. Not all products are affected. Need to test individually.</li> <li>28. Changed configuration manager to address loss of serial number problem.</li> <li>29. Added a ":" after word Address on Network Address Page.</li> <li>30. TCP/IP being disabled caused problems for IPX on IPP builds.</li> <li>31. Fixed potential reset after LPD SYN/FIN command.</li> <li>32. Fixed MAP over IPX when TCP/IP is disabled.</li> <li>33. Fixed 100 base T auto detection by using link instead of auto negotiate complete.</li> <li>34. SNMP fix returning bad values.</li> <li>35. Changed Novell Network ID to HEX on the status page.</li> <li>36. Factory default NIB if NVRAM prefix does not match default prefix.</li> <li>37. Added Intelligent Novell Frame Type algorithm for frame type discovery.</li> <li>38. Fixed Flash_up on an isolated network.</li> <li>39. Fixed Arp / Ping for an odd IP Address which was caused by a November 18, 1999 fix.</li> <li>40. Driver now recognizes and uses FTP type for printing. It used to use TCP type.</li> <li>41. Changed AppleTalk device name to mimic AppleTalk Printer Name via SNMP.</li> <li>42. Fixed concatenated LPR jobs by removing ATTN_EOF between jobs.</li> <li>43. IP Fragmentation fix.</li> <li>44. Fixed echo on 2nd Telnet Login.</li> <li>45. Fixed SNMP Traps.</li> <li>46. Network speed selection (New function)  By default, the Network Interface Board (NIB) automatically senses the available speed of the network connection during power-on initialization and sets the appropriate speed. However, in some limited configurations, it may be desired to shut down the source device while leaving the printer powered on.  When the NIB detects the lost connection, it will try to reconnect and default to 10MB mode. After the source device connection is returned, it will not restore the connection, if it is 100MB only.  To compensate for this, a special Network Speed Selection HTML page is available to select a single network speed for the NIB.  This page may be accessed by specifying &lt;nic address&gt;/nic/speed on your browser. The default selection is "Auto". If one of the single speed selections is set, the NIB will only operate in that mode until either the operator changes the selection or restores the factory settings.  To select a single speed, click on the desired button (10 or 100), and then click "Apply". Reset the printer and verify the correct speed setting via a status page.  The new setting may be verified by printing a network status page. Once set, the speed should remain in that setting during power cycles.</li> </ol>	<p>2.46a</p>



Model: NIB 450E

Date: 12-Dec-00

No.: RA855002

Fixed Bug	Version
<ol style="list-style-type: none"><li>1. RIP management problem from Michelin</li><li>2. AS400 problem from Revlon in Australia</li><li>3. VAX/VMS problem from TV station in Australia</li><li>4. LPR printing problem from Peerless: Occasionally, the 256th job received by the controller following power-up is deleted.</li></ol>	2.49a

Model: NIB 450E		Date: 12-Dec-01	No.: RA855003
Subject: Firmware Release		Prepared by: E. Fukuyama	
From: Technical Services Dept., GTS Division			
Classification:	<input type="checkbox"/> Troubleshooting <input type="checkbox"/> Part information <input type="checkbox"/> Action required <input type="checkbox"/> Mechanical <input type="checkbox"/> Electrical <input type="checkbox"/> Service manual revision <input type="checkbox"/> Paper path <input type="checkbox"/> Transmit/receive <input type="checkbox"/> Retrofit information <input checked="" type="checkbox"/> Other (      )		

Firmware	File No.	Version	Production
Ric401a.upd	V401.zip	4.01a	December Prod. 2001
Ric252a.upd	V252.zip	2.52b	July Prod. 2001
Ric249a.upd	V249.zip	2.49a	October Prod. 2000
Ric246a.upd	V246.zip	2.46a	June Prod. 2000
Ric238a.upd	V238a.zip	2.38a	October Prod. 1999
Ric235b.upd	V235b.zip	2.35b	August Prod. 1999
Ric231a.upd	V231.zip	2.31a	1st Mass Prod

Symptoms Corrected (2.52b and 4.01a only)	Version
<ol style="list-style-type: none"> <li>SC2001 error caused by bus-timeout error when controller accesses shared memory on the NIB has been fixed..</li> <li>Novell NCP communication error when packet signature level is set at 2 has been fixed.</li> <li>AppleTalk communication error in networks with Zones has been fixed.</li> <li>WINS settings have been added to the NIB TCP setup page.</li> </ol> <p><b>Important</b>  FLASHUP V. 1.23 must be used to upgrade NIB firmware 2.5x to 4.xx. Older FLASHUP versions and FTPDL versions are not compatible with firmware version 4.01a.</p> <p><b>To run FLASHUP, choose "Run" from the Windows Startup Menu, select the Flashup.exe file, then tag on "NSSUPER" at the end as shown in the following example:</b>  C:\Temp\Flash_up.exe NSSUPER</p>	4.01a
<ol style="list-style-type: none"> <li>NIB450E disconnects from the network. The timer for FIN response during socket printing has been reduced from 2s→100ms.</li> <li>Memory size for the entire PostScript Banner has been increased from 120→256 bytes. (the banner includes host, user and file name data).</li> <li>Software modified to support WINS. With this modification, the Net BIOS name and Host Name on the DHCP can be changed.</li> <li>Hang up occurs when using Multicast with Ghost6.5. (However, this did not occur with Appletalk Multicasting.)</li> </ol>	2.52b

Model: NIB450e		Date: 20-Dec-02	No.: RA855004
Subject: FTPDL V1.50a		Prepared by: Y.Urushihara	
From: Technical Services sec. Service Planning Dept.			
Classification:	<input type="checkbox"/> Troubleshooting <input type="checkbox"/> Part information <input type="checkbox"/> Action required <input type="checkbox"/> Mechanical <input type="checkbox"/> Electrical <input type="checkbox"/> Service manual revision <input type="checkbox"/> Paper path <input type="checkbox"/> Transmit/receive <input type="checkbox"/> Retrofit information <input checked="" type="checkbox"/> Other (      )		

## FTP Download Version 1.50a

### <System Requirements>

Windows95/98/Me/2000/NT/XP  
TCP/IP protocol installed

### <Target Models>

NIB 450E  
NIB Type2000  
NIB Type1018

### <Target firmware>

- ✓ Rewriting possible.
- ✦ Rewriting possible, but the printer needs to be rebooted.
- Rewriting not possible.

NIB 450E		To:					
		V2.38	V2.46	V2.49	V2.52b	V4.01a	V4.02b
From:	V2.38	✓	✓	✓	✓	✦	✦
	V2.46	✓	✓	✓	✓	✦	✦
	V2.49	✓	✓	✓	✓	✦	✦
	V2.52b	✓	✓	✓	✓	✦	✦
	V4.01a	---	---	---	---	✓	✓
	V4.02b	---	---	---	---	✓	✓

NIB Type2000		To:		
		V5.38	V5.65a	V5.72b
From:	V5.38	✓	✓	✓
	V5.65a	✓	✓	✓
	V5.72b	✓	✓	✓

Model: NIB450e	Date: 20-Dec-02	No.: RA855004
----------------	-----------------	---------------

NIB Type1018		To:		
		V6.18	V6.19	V6.27a
From:	V6.18	✓	✓	✓
	V6.19	✓	✓	✓
	V6.27a	✓	✓	✓

## <Testing complete on following firmware versions>

[NIB 450E]

v2.38, v2.46, v2.49, v2.52b, v4.01a, v4.02b

[NIB Type2000]

v5.38, v5.65a, v5.72b

[NIB Type1018]

v6.18, v6.19, v6.27a

## <Download Procedure>

**Important:** Make sure the printer main power is off before beginning.

1. Connect the PC to the NIB.

Both LAN and direct cross-cable connection are possible. However, if using a LAN connection, it is best to choose an environment with low network traffic.

2. Uninstall the firmware currently installed (if a FTPDL file is present).

3. Run the self-extracting file FTPDL150a.EXE, then specify the directory you wish to extract the file to.

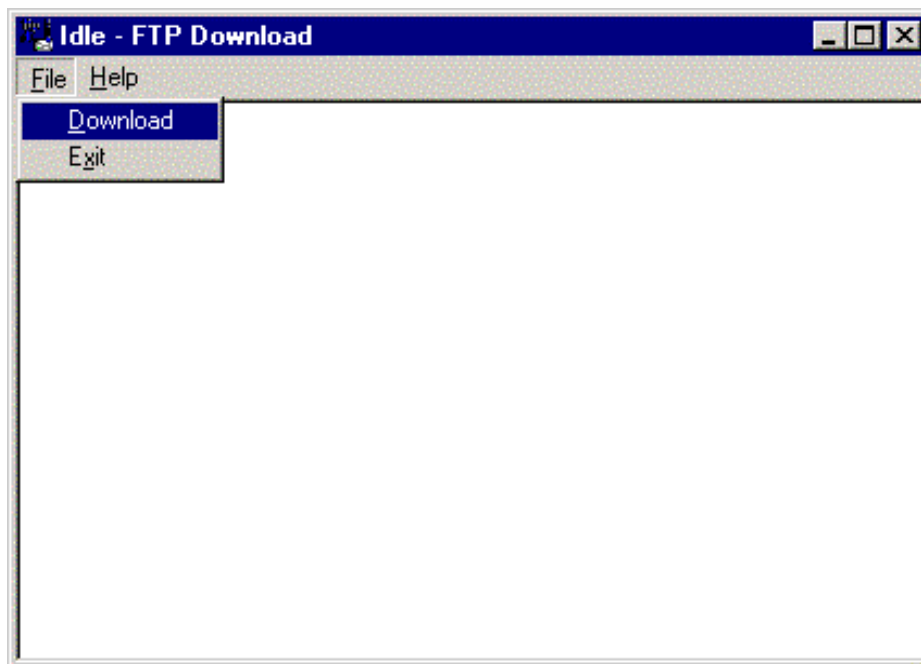
4. Run SETUP.EXE, located inside the self-extracting file above to begin the installation.

**Note:** For multi-OS environments, it is necessary to specify one operating system for the installation.

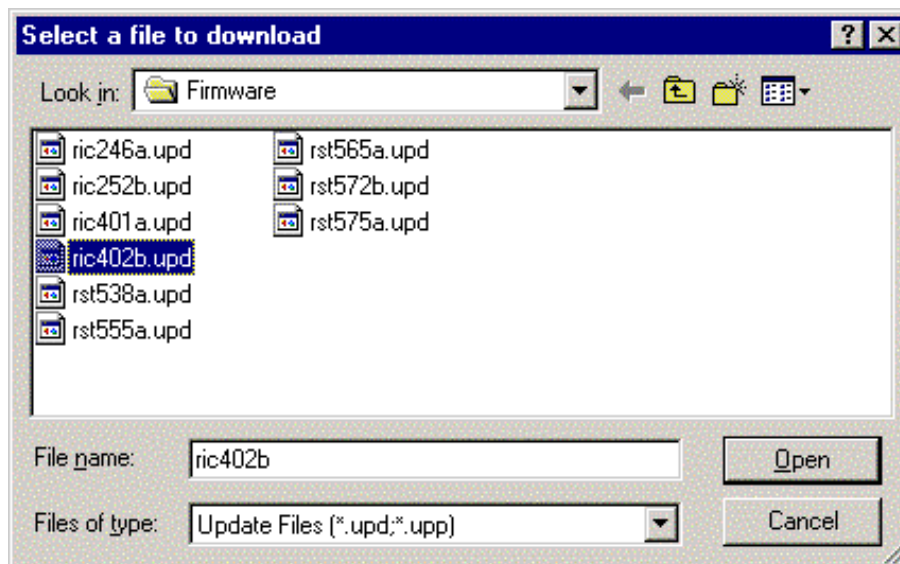
5. Turn on the printer main power and wait until it has booted up completely. If the NIB status sheet print has been activated, please wait until this sheet is printed out.

6. Enable TCP/IP for the target NIB.

7. Run FTPDL150a and click [File] – [Download]



8. Select the UPD firmware file and click [Open]



Model: NIB450e

Date: 20-Dec-02

No.: RA855004

9. Input the target IP address

10. Input the target password ("sysadm").



**Important:** For Steps 11-13, please:

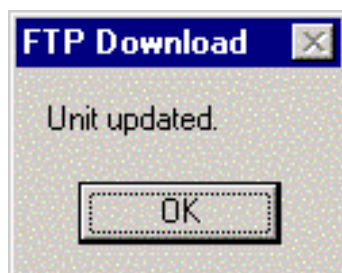
- Do not turn on the machine main power
- Do not send any print data to the machine
- Do not access an http:// internet page.
- Do not connect with TELNET or FTP

11. The machine will display "Downloading NIC Update Program [BIN] to NIC", and begin downloading the BIN file. This will take about 2 minutes, during which time the panel will show how much has been completed (%).

12. The display will then change to "Downloading Flash Update File [UPD] to NIC", and the machine will begin downloading the UPD file. This will take about 3 minutes, during which time the panel will show how much has been completed (%).

13. After the UPD file download has been completed, the machine will display "Unit updated", and will then begin formatting the NIB. Please wait for this to finish (at least 2 minutes), and if NIB status sheet printing has been activated, please wait for the sheet to be printed out.

**Important:** Since a firmware update also overwrites the actual program that brings the firmware on line (booting program), if the power is turned off before the 2 minutes are up, the machine will in most cases not come back on line (not recover). Therefore it is very important to wait the 2 minutes after the "unit updated" message is displayed."



Model: NIB450e

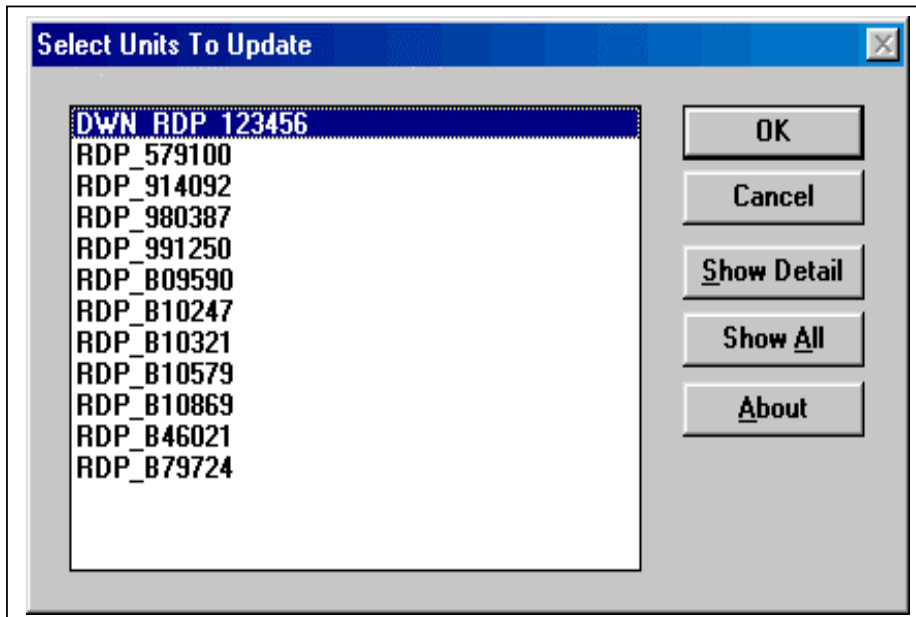
Date: 20-Dec-02

No.: RA855004

## <Recovery Method>

**Important:** Make sure the printer main power is off before beginning.

1. Remove the NIB, then move the jumper pin to the ON position ("BYPASS").
2. Reattach the NIB and turn on the printer main power.
3. Run the FlashUp tool and select the firmware (UPD file).
4. In the following screen, confirm that the NIB is displayed (DWN\_RDP\_xxxxxx). If it is not, recovery cannot be performed using this tool, and the NIB will need to be reprogrammed by the manufacturer (NetSilicon).
5. Select the NIB and click OK. The update will then be performed automatically.



6. After the update is completed, return the NIB jumper pin to its original position (OFF). Then, turn on the printer main power.

Model: NIB450e

Date: 20-Dec-02

No.: RA855004

**<Limitations>**

1. It is not possible to rewrite NIB 450E firmware v4.xx or newer with v2.xx or older.
2. After upgrading from v2.xx to v4.xx, it is necessary to reboot the printer.
3. It is very rare for the panel display to freeze while the download is in progress.  
However, even if this should happen, it is possible that the download itself is still proceeding normally. Therefore please wait 4-5 minutes before rebooting the machine.



Reissued: 12-Apr-05

Model: NIB 450E	Date: 12-Dec-01	No.: RA855003a
-----------------	-----------------	----------------

## RTB Reissue

The items in bold italics have been added.

Subject: Firmware Release		Prepared by: Y.Urushihara	
From: 1st Tech. Support Sec. Service Support Dept.			
Classification:	<input type="checkbox"/> Troubleshooting <input type="checkbox"/> Mechanical <input type="checkbox"/> Paper path <input checked="" type="checkbox"/> Other (      )	<input type="checkbox"/> Part information <input type="checkbox"/> Electrical <input type="checkbox"/> Transmit/receive	<input type="checkbox"/> Action required <input type="checkbox"/> Service manual revision <input type="checkbox"/> Retrofit information

Firmware	File No.	Version	Production
<b><i>Ric403i.upd</i></b>	<b><i>V403.zip</i></b>	<b><i>4.03i</i></b>	<b><i>April Prod 2005</i></b>
Ric401a.upd	V401.zip	4.01a	December Prod. 2001
Ric252a.upd	V252.zip	2.52b	July Prod. 2001
Ric249a.upd	V249.zip	2.49a	October Prod. 2000
Ric246a.upd	V246.zip	2.46a	June Prod. 2000
Ric238a.upd	V238a.zip	2.38a	October Prod. 1999
Ric235b.upd	V235b.zip	2.35b	August Prod. 1999
Ric231a.upd	V231.zip	2.31a	1st Mass Prod

Symptom Corrected	Version
<b><i>Specially crafted ICMP packet causes DoS. This was reported in Secunia advisory SA13475 (<a href="http://secunia.com/advisories/13475/">http://secunia.com/advisories/13475/</a>). (TechMail#OTS-2005-404)</i></b>	<b><i>4.03i</i></b>
1. SC2001 error caused by bus-timeout error when controller accesses share memory on the NIB has been fixed.. 2. Novell NCP communication error when packet signature level is set at 2 has been fixed. 3. AppleTalk communication error in network with Zones has been fixed. 4. WINS settings have been added to the NIB TCP setup page.  <b>Important</b> FLASHUP V. 1.23 must be used to upgrade NIB firmware 2.5x to 4.xx. Older FLASHUP versions and FTPDL versions are not compatible with firmware version 4.01a.  <b>To run FLASHUP, choose "Run" from the Windows Startup Menu, select the Flashup.exe file, then tag on "NSSUPER" at the end as shown in the following example:</b> <b>C:\Temp\Flash_up.exe NSSUPER</b>	4.01a
1. NIB450E disconnects from network. The timer for FIN response during socket printing has been reduced from 2s→100ms. 2. Memory size for the entire PostScript Banner has been increased from 120→256 bytes. (the banner includes host, user and file name data). 3. Software modified to support WINS. With this modification, the Net BIOS name and Host Name on the DHCP can be changed. 4. Hang up occurs when using Multicast with Ghost6.5. (however this did not occur with Appletalk Multicasting).	2.52b

**Reissued: 12-Apr-05**

Model: NIB 450E	Date: 12-Dec-01	No.: RA855003a
<div>1. Now the NDS tree and context is not lost when downloading new ROM version.</div> <div>2. Fixed reset after flash download.</div> <div>3. Fixed HTML reset from Internet Explorer supporting HTTP 1.1. The reset would work, but it would take 2 minutes due to persistent connections.</div> <div>4. Clear zero length AppleTalk name when NIB loads AppleTalk stack.</div> <div>5. SNMP Fixes.</div> <div>6. Added a range check on NetWare Frame Type.<div>a. Fixed Get Next for NetWare Queue Index and Message Index.</div><div>b. Changed NetWare Port Table To 1 blank entry.</div><div>c. Made all email objects not supported. Most show as "N/A" and some have values, but now none are writeable.</div></div> <div>7. Fix Novell Notify to user after a job.</div> <div>8. Added new mfdiag15 to the build tree to save and to restore NVRAM.</div> <div>9. Added code to reinitialize card if the prefix doesn't match what is in NVRAM. This is mostly for manufacturing when downloading different code into a NIB card.</div> <div>10.Fixed consistency of enable / disable and made serial number read / only in SNMP.</div> <div>11.Fixed data out of order on concatenated LPR jobs with banners enabled.</div> <div>12.Fixed potential crash during soft reset where an interrupt could hit before the vector table was set.</div> <div>13.Fixed problem where MAP could display unit as NPS_XXXXXX.</div> <div>14.Fixed end_doc / start_doc between concatenated LPR jobs from Linux. It sends ctrl files in a different way than UNIX.</div> <div>15.Fixed a problem where the HTTP server could reset the connection before all the data was sent.</div> <div>16.Now can detect 0 as an invalid IP Address in the 1st and last IP Address location in HTML.</div> <div>17.Fixed Novell NDS printing on 802.2.</div> <div>18.Fixed Sockets Printing for the AS400 (fin followed by reset connection).</div> <div>19.Fixed LPR control file fragmentation problem.</div> <div>20.UDP Broadcast Filter.</div> <div>21.Fixed SNMP to send objects beyond DPI MIB to printer.</div> <div>22.Fixed Novell notify toner out message. It was sending "toner low."</div> <div>23.Fixed LPR fragmentation.</div> <div>24.Ethernet changes to handle heavy traffic conditions.</div> <div>25.Fixed UDP filter for MAP discovery for units supporting DHCP/WINS functionality.</div> <div>26.Fixed DHCP offer with destination IP Address not equal to 255.255.255.255.</div> <div>27.TCP Page accepted changes with any password. Not all products are affected. Need to test individually.</div> <div>28.Changed configuration manager to address loss of serial number problem.</div> <div>29.Added a ":" after word Address on Network Address Page.</div> <div>30.TCPIP being disabled caused problems for IPX on IPP builds.</div> <div>31.Fixed potential reset after LPD SYN/FIN command.</div> <div>32.Fixed MAP over IPX when TCP/IP is disabled.</div> <div>33.Fixed 100 base T auto detection by using link instead of auto negotiate complete.</div> <div>34.SNMP fix returning bad values.</div> <div>35.Changed Novell Network ID to HEX on the status page.</div> <div>36.Factory default NIB if NVRAM prefix does not match default prefix.</div> <div>37.Added Intelligent Novell Frame Type algorithm for frame type discovery.</div> <div>38.Fixed Flash_up on an isolated network.</div> <div>39.Fixed Arp / Ping for an odd IP Address which was caused by a November 18, 1999 fix.</div> <div>40.Driver now recognizes and uses FTP type for printing. It used to use TCP type.</div> <div>41.Changed AppleTalk device name to mimic AppleTalk Printer Name via SNMP.</div> <div>42.Fixed concatenated LPR jobs by removing ATTN_EOF between jobs.</div> <div>43.IP Fragmentation fix.</div> <div>44.Fixed echo on 2nd Telnet Login.</div>		2.46a

Reissued: 12-Apr-05

Model: NIB 450E	Date: 12-Dec-01	No.: RA855003a
<p>45.Fixed SNMP Traps.</p> <p>46.Network speed selection (New function)</p> <p>By default, the Network Interface Board (NIB) automatically senses the available speed of the network connection during power-on initialization and sets the appropriate speed.</p> <p>However, in some limited configurations, it may be desired to shut down the source device while leaving the printer powered on.</p> <p>When the NIB detects the lost connection, it will try to reconnect and default to 10MB mode. After the source device connection is returned, it will not restore the connection, if it is 100MB only.</p> <p>To compensate for this, a special Network Speed Selection HTML page is available to select a single network speed for the NIB.</p> <p>This page may be accessed by specifying &lt;nic address&gt;/nic/speed on your browser. The default selection is "Auto". If one of the single speed selections is set, the NIB will only operate in that mode until either the operator changes the selection or restores the factory settings.</p> <p>To select a single speed, click on the desired button (10 or 100), and then click "Apply". Reset the printer and verify the correct speed setting via a status page.</p> <p>The new setting may be verified by printing a network status page. Once set, the speed should remain in that setting during power cycles.</p>		
<p>1. No log on to NDS for Novell4.11</p> <p>2. LPR printing fix. When the connection request list was cleared due to duplicate requests, the flag was not set to accept new requests. This could result in the NIB not responding to connection requests for a period of time.</p> <p>3. Improved the fix from 2.37 for LPD printing to handle properly the LPD Daemon Command 1, (print waiting jobs).</p> <p>4. Fixed reset after flash download.</p> <p>5. Fixed test print html page.</p>		2.38a
<p>1. When the reset is required in SNMP, the NIB will reset without any response and hung up.</p>		2.35b